

APPLICATION NOTE

SensoMATCH[®] bullet comparison software



► **Introduction**

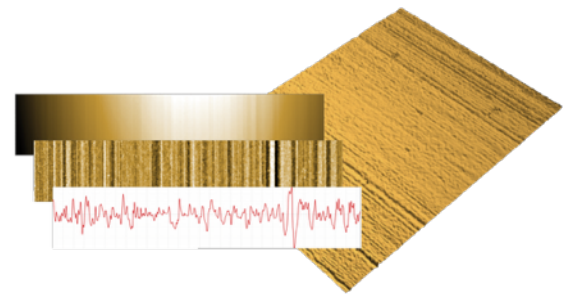
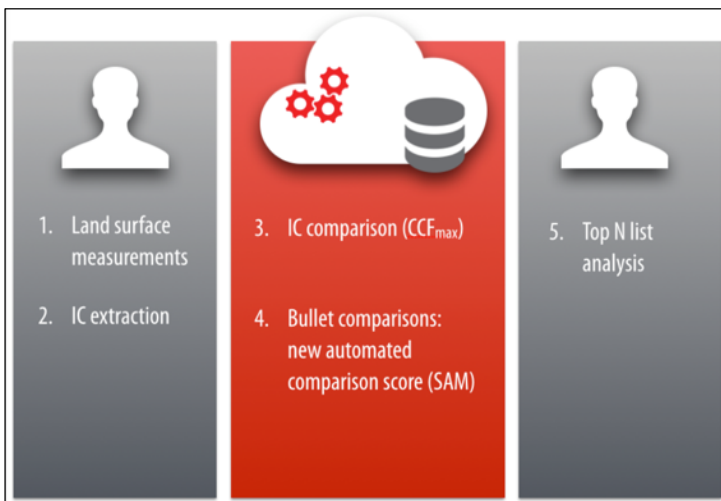
To match a bullet to a firearm, a trained examiner traditionally uses a microscope to compare the striations on each available 'land area' on the bullet to the land areas on a (known) bullet fired from the firearm. Although it has been reliable, this process is tedious and subjective.

► **Methodology**

Sensofar is working to provide quantitative data on bullet lands using optical 3-dimensional metrology. **SensoMATCH[®]** is a new program that fully automates IC and bullet comparison. The process typically consists of five steps:

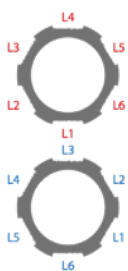


Land surface measurement



IC surface & mean profile

Pairs of IC surfaces are mathematically compared by extracting mean profiles from each surface and calculating a cross correlation function (CCF_{max}). Identical profiles have a $CCF_{max} = 1.0$. Lower correlations yield a lower CCF_{max} value, typically 0.2 - 0.4. Higher scores thus indicate the confidence level of a match.



A single comparison of 2 bullets each with 6 lands results in 36 CCF_{max} scores in a 6x6 matrix

IC	L1	L2	L3	L4	L5	L6	Seq. Av
L1	0.28	0.31	0.88	0.27	0.28	0.36	0.30
L2	0.37	0.28	0.27	0.88	0.35	0.22	0.28
L3	0.24	0.28	0.24	0.33	0.89	0.27	0.77 SAM
L4	0.33	0.23	0.35	0.41	0.24	0.27	0.29
L5	0.87	0.24	0.27	0.31	0.26	0.29	0.25
L6	0.22	0.83	0.29	0.25	0.30	0.34	0.33

This comparison task scales very rapidly – comparing 15 unknown bullets to 20 known bullets results in 10,800 scores in 300 matrices.

► **SensoMATCH® streamlines bullet comparison**

To simplify analysis, we can calculate a single composite score for each bullet pair – **Sequence Average Maximum (SAM)** – that provides a clear indication of a match between bullets. The user specifies the threshold value that is used to identify matches (see graphic below right).

The entire John Hamby dataset of **15 vs. 20 bullets** (10,800 comparisons) can be processed in approximately **4 seconds**, resulting in a spreadsheet that identifies the top matches for each unknown bullet.

► **Additional features**

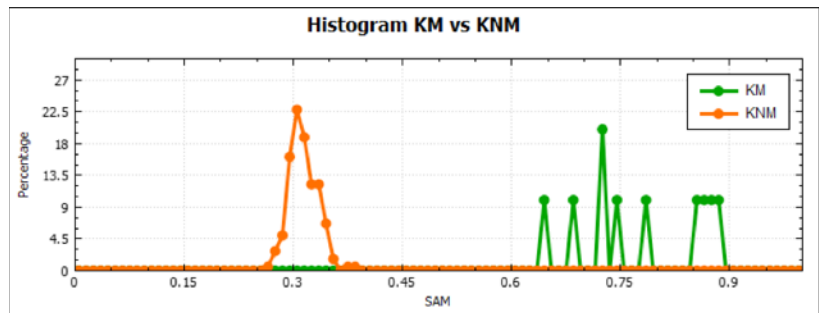
SensoMATCH® has additional features that make it an ideal tool for research in bullet comparisons based on 3D surface metrology:

- Training mode.
- **SensoMAP** template for IC comparison using customized data processing and comparison parameters.
- Missing lands compatibility.
- Comparing a set of known bullets to itself is useful for calculating statistical values for ‘Known Matches vs. Known Non-Matches’ and then using this to define **SAM** thresholds (see graphic right).
- This approach to data analysis can be made using a variety of optical metrology systems, including the Sensofar family of optical metrology systems.

SensoMATCH results															
SAM	B	C	D	E	F	H	J	L	M	Q	S	U	X	Y	Z
1 b1	0.33	0.77	0.32	0.32	0.77	0.32	0.31	0.28	0.30	0.30	0.31	0.31	0.30	0.32	0.34
1 b2	0.28	0.73	0.31	0.31	0.70	0.32	0.31	0.29	0.32	0.33	0.31	0.31	0.32	0.32	0.32
2 b1	0.29	0.33	0.30	0.31	0.31	0.81	0.29	0.30	0.30	0.31	0.29	0.32	0.28	0.32	0.29
2 b2	0.29	0.33	0.31	0.31	0.31	0.81	0.30	0.29	0.29	0.32	0.30	0.31	0.31	0.31	0.30
3 b1	0.28	0.30	0.32	0.30	0.32	0.28	0.33	0.28	0.29	0.30	0.61	0.29	0.64	0.30	0.31
3 b2	0.29	0.29	0.31	0.31	0.30	0.29	0.31	0.30	0.29	0.29	0.61	0.30	0.78	0.32	0.30
4 b1	0.67	0.31	0.33	0.33	0.31	0.31	0.32	0.29	0.30	0.32	0.32	0.33	0.30	0.35	0.33
4 b2	0.61	0.32	0.33	0.35	0.31	0.29	0.31	0.32	0.32	0.32	0.32	0.35	0.31	0.34	0.34
5 b1	0.30	0.34	0.88	0.37	0.34	0.29	0.33	0.30	0.35	0.33	0.32	0.31	0.29	0.34	0.85
5 b2	0.30	0.36	0.88	0.39	0.35	0.31	0.33	0.32	0.36	0.35	0.34	0.32	0.32	0.35	0.84
6 b1	0.27	0.31	0.32	0.78	0.32	0.30	0.27	0.28	0.62	0.28	0.28	0.28	0.28	0.74	0.32
6 b2	0.29	0.31	0.34	0.74	0.32	0.28	0.30	0.28	0.72	0.32	0.31	0.29	0.31	0.68	0.31
7 b1	0.33	0.32	0.33	0.32	0.30	0.32	0.85	0.30	0.29	0.31	0.36	0.30	0.31	0.32	0.33
7 b2	0.32	0.33	0.31	0.33	0.31	0.29	0.82	0.29	0.29	0.30	0.34	0.30	0.30	0.33	0.33
8 b1	0.31	0.32	0.31	0.31	0.29	0.33	0.29	0.78	0.30	0.29	0.32	0.32	0.30	0.32	0.28
8 b2	0.31	0.29	0.33	0.32	0.28	0.31	0.28	0.79	0.31	0.30	0.32	0.32	0.28	0.31	0.28
9 b1	0.30	0.33	0.32	0.31	0.35	0.33	0.30	0.36	0.31	0.30	0.33	0.69	0.32	0.32	0.33
9 b2	0.29	0.32	0.32	0.31	0.31	0.31	0.32	0.33	0.32	0.29	0.32	0.71	0.32	0.32	0.31
10 b1	0.30	0.28	0.32	0.34	0.28	0.30	0.28	0.26	0.31	0.55	0.32	0.31	0.29	0.34	0.34
10 b2	0.31	0.32	0.34	0.36	0.32	0.31	0.31	0.31	0.30	0.60	0.34	0.32	0.32	0.35	0.32

NIST results															
	B	C	D	E	F	H	J	L	M	Q	S	U	X	Y	Z
	4	1	5	6	1	2	7	8	6	10	3	9	3	6	5

John Hamby test is correctly solved (SAM threshold 0.5)



Establishing SAM threshold based on the histogram of CFF_{max} values

Sensofar is a leading-edge technology company with the highest quality standards within the field of surface metrology.

HEADQUARTERS

SENSOFAR METROLOGY
 Parc Audiovisual de Catalunya
 Ctra. BV-1274, KM 1
 08225 Terrassa, Spain

Tel. +34 93 700 14 92
 Fax +34 93 786 01 16
 info@sensofar.com
 www.sensofar.com

SALES OFFICE

SENSOFAR ASIA
 Room 102, Building C
 No. 838, GUANGJI Road, HONGKOU District
 200434 Shanghai, PR CHINA

Tel. +86 21 61400058
 Fax +86 21 61400059
 info.asia@sensofar.com
 www.sensofar.com

SALES OFFICE

SENSOFAR USA
 8655 E Via De Ventura
 Suite G168
 Scottsdale, AZ 85258, USA

Tel. +1 800 530-3097
 Fax +1 419 745-1506
 info@sensofarusa.com
 www.sensofarusa.com